

(SVHC)

15

LED

SGS

GZP23-013561

2023 09 13

2023 09 13 ~ 2023 09 27

(i) (2023 6 14 1907/2006 REACH) 235

(SVHC)

(ii) (2023 9 1 1907/2006 REACH) 5 (SVHC)

(iii) WTO 2021 6 1 1 (SVHC)

(iv) REACH) 7 (SVHC) (1907/2006

REACH SVHC	0.1% (w/w)	
---------------	------------	--

史丽兰

Violet Shi

scan to see the report



(SVHC)

1.

<http://echa.europa.eu/web/guest/candidate-list-table>

2. REACH

2.1

1907/2006 EC 33 57 59
0.1%

1907/2006 EC 57
59 (a) 1 / / 7 4 (b)
0.1%

2021 SVHC 1 5 0.1% w/w
SCIP 2008/98/EC ECHA

2.2

SVHC

31 1907/2006 REACH

2.3

0.1% (w/w) / 1272/2008 CLP
1907/2006 REACH

(SDS)

- 1272/2008 CLP
- 1272/2008 CLP
1272/2008 CLP ;
- 1272/2008 CLP

(a) 0.2 1 (w/w)

(b) PBT vPvB 0.1 (w/w)

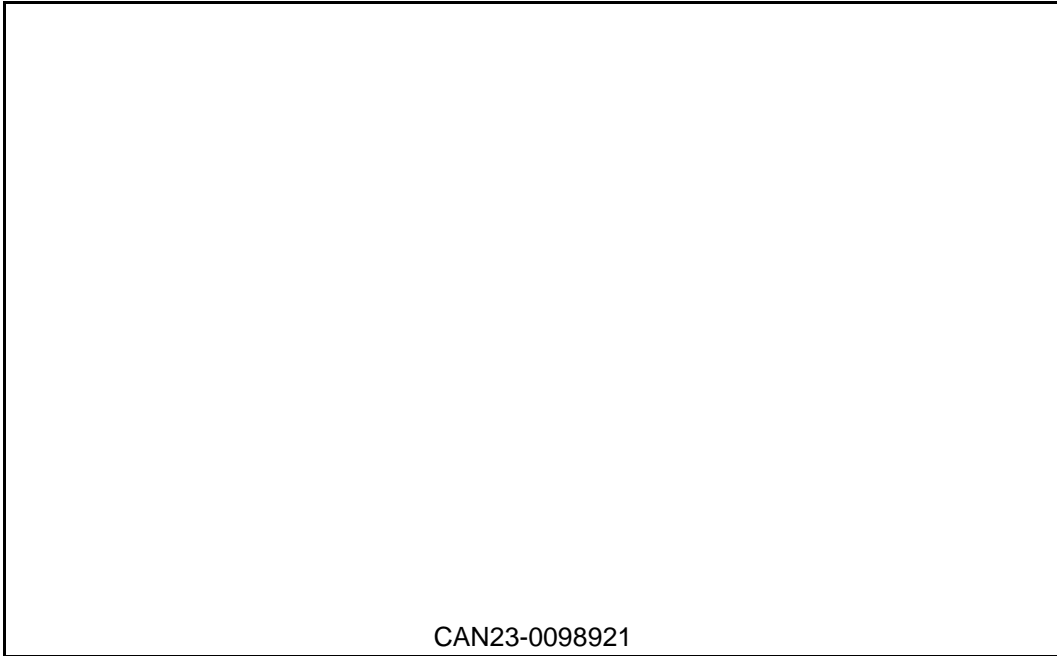
(c) (w/w) 0.1

(d)

3.

SVHC SVHC

(SVHC)



SGS

ID		ID	
A1		A2	
A3	/	A4	"PCBA"
A5		-	-

(SVHC)

		CAS No.	001 (%)	RL (%)
-	SVHC	-	ND	-

SVHC

		CAS No.	001 (%)	RL (%)
/	SVHC	-	ND	-

		CAS No.	002 (%)	RL (%)
XIX		7439-92-1	0.018	0.005
-	SVHC	-	ND	-

(1) SVHC RL SVHC SVHC
 (2) RL = (RL RL)
 ND = (RL) ND SVHC
 (3) *
 **

ICP-OES

ICP-OES

RL = 0.005% ((VI))
 RL= 0.0005% RL=0.0025%() RL=0.050%
 (4) § (CAS No.: 90-94-8) (CAS No.: 101-61-1) 0.1%(w / w)
 SVHC

(5)
 (6) /
 (7) / = SVHC

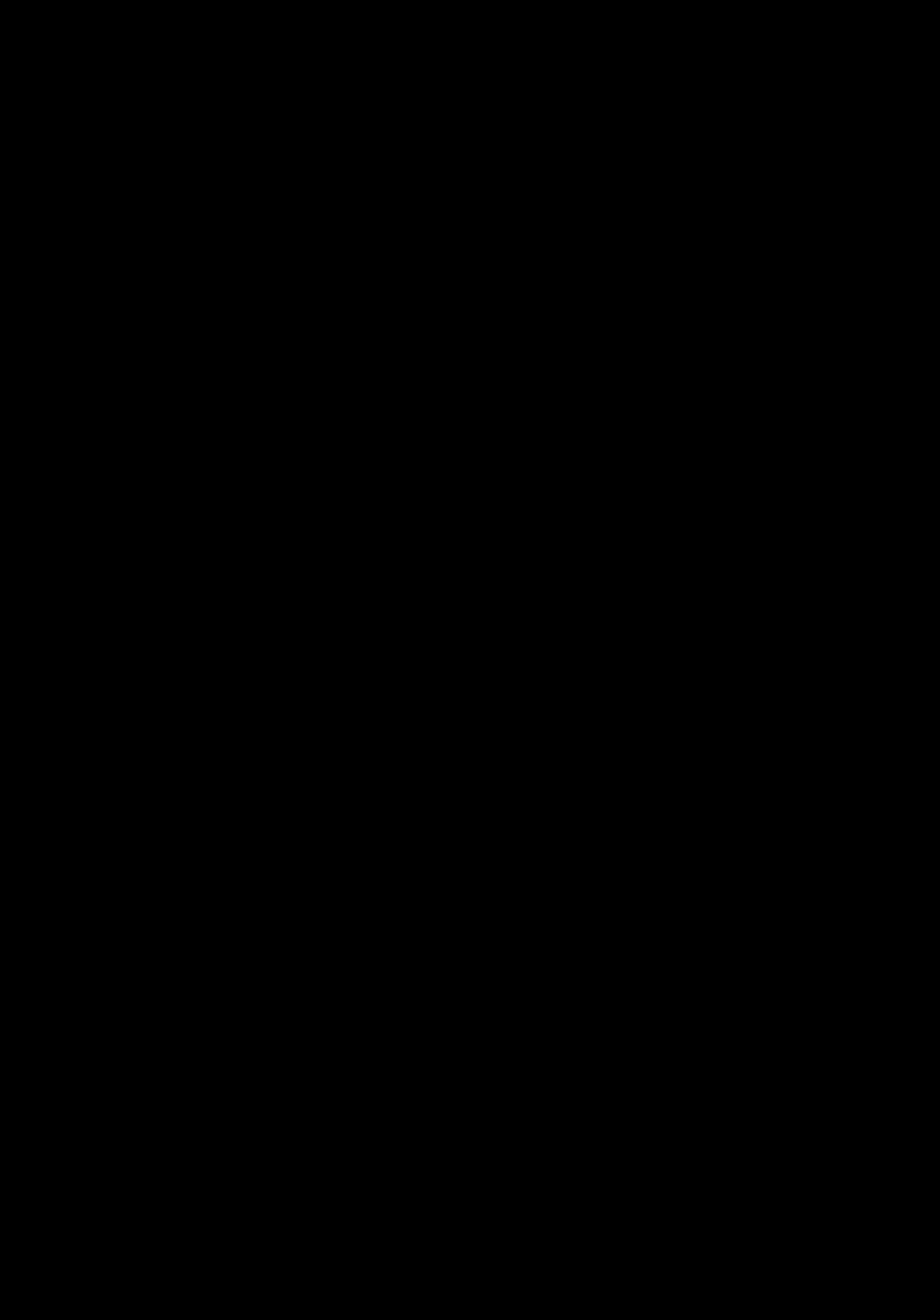
(SVHC)

SVHC:

			CAS No.	RL (%)
I	1	4,4'- (MDA)	101-77-9	0.050
I	2	2,4,6- -5- ()	81-15-2	0.050
I	3	C10-13 ()	85535-84-8	0.050
I	4		120-12-7	0.050

(SVHC)

			CAS No.	RL (%)
IV	38		109-86-4	0.050
IV	39	, , *	-	0.005
IV	40	*	1333-82-0	0.005



(SVHC)

			CAS No.	RL (%)
VII	79		75-12-7	0.050
VII	80	*	17570-76-2	0.005
VII	81	N,N,N',N'-4,4'-()	101-61-1	0.050
VII	82	1,3,5-()-1,3,5-2,4,6-(1H,3H,5H)-(TGIC)	2451-62-9	0.050
VII	83	C.I. 4§	6786-83-0	0.050
VII	84	1,3,5-[(2S 2R)-2,3-2,4,6-(1H, 3H, 5H)-(-TGIC)]-1,3,5-	59653-74-6	0.050

(SVHC)

			CAS No.	RL (%)
VIII	116	*	1317-36-8	0.005
VIII	117	*	12036-76-9	0.005
VIII	118	*	1314-41-6	0.005
VIII	119	*	12060-00-3	0.005
VIII	120	*	12626-81-2	0.005
VIII	121		625-45-6	0.050
VIII	122	1,2-	75-56-9	0.050
VIII	123	N,N-	68-12-2	0.050
VIII	124	N-	79-16-3	0.050
VIII	125		776297-69-9	0.050
VIII	126	-	97-56-3	0.050
VIII	127	2-	95-53-4	0.050
VIII	128		72629-94-8	0.050
VIII	129	*	12065-90-6	0.005
VIII	130	*	8012-00-8	0.005
VIII	131	*	68784-75-8	0.005
VIII	132	*	11120-22-2	0.005
VIII	133	*	62229-08-7	0.005

VIII

(SVHC)

			CAS No.	RL (%)
XII	157	2- -2- -4,6- (UV-320)	3846-71-7	0.050
XII	158	- (2-) (DOTE)	15571-58-1	0.050
XII	159	*	7790-79-6	0.005
XII	160	*	10124-36-4 /31119-53-6	0.005
XII	161	- (2-) (DOTE) - (2-) (MOTE)	-	0.050
XIII	162	1,2- , (C6-10) / 1,2- , 0.3	-	0.050
XIII	163	5- -2-(2,4- -3- -1-)-5- -1,3- [1] 5- -2-(4,6- -3- -1-)-5- -1,3- [2] [[1] [2]]	-	0.050
XIV	164	1,3-	1120-71-4	0.050
XIV	165	2,4- -6-(5- -2- (UV-327)	3864-99-1	0.050
XIV	166	2-(2H- -2-)-4-()-6-() (UV-350)	36437-37-3	0.050
XIV	167		98-95-3	0.050
XIV	168		-	0.050
XV	169	(a)	50-32-8	0.050
XVI	170	4,4'- (A)	80-05-7	0.050
XVI	171	4- ()	-	0.050
XVI	172	(PFDA)	-	0.050
XVI	173		80-46-6	0.050
XVII	174	-1-	-	0.050
XVIII	175	() ()	-	0.050
XVIII	176	(BaA)	56-55-3	0.050
XVIII	177	*	10325-94-7	0.005
XVIII	178	*	513-78-0	0.005
XVIII	179	*	21041-95-2	0.005
XVIII	180	(CHR)	218-01	

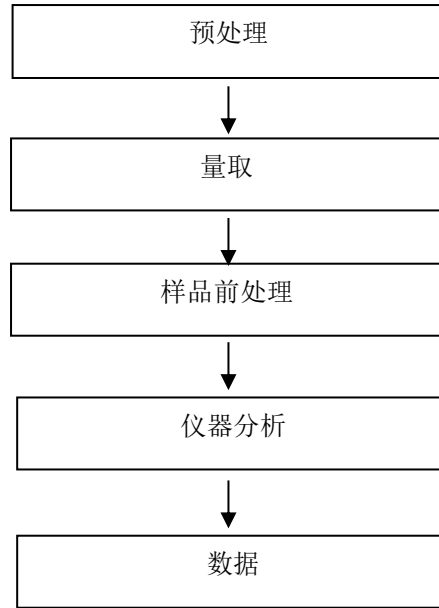
(SVHC)

			CAS No.	RL (%)
XIX	187	(D6)	540-97-6	0.050
XIX	188	(EDA)	107-15-3	0.050
XIX	189		7439-92-1	0.005

CANEC23009892102

2023

(SVHC)



(SVHC)

CANEC23009892102

2023 09 28

13

13