

(SVHC)

15

LED

SGS

GZP24-033548

2024 10 16

2024 10 16 ~ 2024 10 23

(i) ( 2024 6 27 REACH ) 241  
(SVHC)

(i) ( 2024 8 30 REACH ) 6 (SVHC)  
1907/2006

(ii) 2 (SVHC)  
(iii) REACH ) 6 (SVHC) ( 1907/2006

|       |          |
|-------|----------|
| REACH |          |
| (w/w) | 241 SVHC |

任婷

Annie Ren

scan to see the report



29F96978



(SVHC)

|                  |  |
|------------------|--|
| REACH<br>14 SVHC |  |
|------------------|--|



(SVHC)

1.

<http://echa.europa.eu/web/guest/candidate-list-table>

2. REACH

2.1

1907/2006 EC  
0.1%

33

57

59



(SVHC)

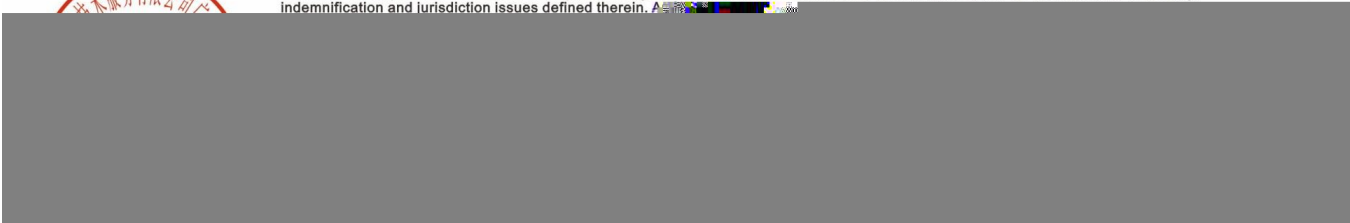
| ID  |  | ID | SGS ID                  |
|-----|--|----|-------------------------|
| 001 |  | A1 | CAN24-0228108-0001.C001 |

SGS

ICP-OES UV-VIS GC-MS HPLC-DAD/MS



Unless otherwise agreed in writing, this document is issued by the Company subject to its General Conditions of Service printed overleaf, available on request or accessible at <https://www.sgs.com/en/Terms-and-Conditions>. Attention is drawn to the limitation of liability, indemnification and jurisdiction issues defined therein.



(SVHC)

**SVHC**

|   |      | CAS No. | 001 (%) | RL (%) |
|---|------|---------|---------|--------|
| - | SVHC | -       | ND      | -      |

**SVHC**

|   |      | CAS No. | 001 (%) | RL (%) |
|---|------|---------|---------|--------|
| / | SVHC | -       | ND      | -      |

(1) SVHC RL SVHC SVHC  
 (2) RL = ( RL) ND SVHC RL )  
 ND = ( RL) ND SVHC  
 (3) \*  
 \*\*

ICP-OES

ICP-OES

RL = 0.005% ( (VI) )  
 RL= 0.0005% RL=0.0025%( ) RL=0.050%  
 (4) § (CAS No.: 90-94-8) (CAS No.: 101-61-1)

SVHC

(5) / = SVHC

A.

198 ; B.

1501 3 101

ILAC-G8:09/2019

w=0



(SVHC)

SVHC:

|     |    |                   | CAS No.                          | RL (%) |
|-----|----|-------------------|----------------------------------|--------|
| I   | 1  | 4,4'- (MDA)       | 101-77-9                         | 0.050  |
| I   | 2  | 2,4,6- -5- ( )    | 81-15-2                          | 0.050  |
| I   | 3  | C10-13 ( )        | 85535-84-8                       | 0.050  |
| I   | 4  |                   | 120-12-7                         | 0.050  |
| I   | 5  | (BBP)             | 85-68-7                          | 0.050  |
| I   | 6  | (2- ) (DEHP)      | 117-81-7                         | 0.050  |
| I   | 7  | (TBTO)            | 56-35-9                          | 0.050  |
| I   | 8  | *                 | 7646-79-9                        | 0.005  |
| I   | 9  | *                 | 1303-28-2                        | 0.005  |
| I   | 10 | *                 | 1327-53-3                        | 0.005  |
| I   | 11 | (DBP)             | 84-74-2                          | 0.050  |
| I   | 12 | (HBCDD) - -HBCDD) | -                                | 0.050  |
| I   | 13 | *                 | 7784-40-9                        | 0.005  |
| I   | 14 | *                 | 10588-01-9 /7789-12-0            | 0.005  |
| I   | 15 | *                 | 15606-95-8                       | 0.005  |
| II  | 16 | 2,4-              | 121-14-2                         | 0.050  |
| II  | 17 | **                | 90640-80-5                       | 0.050  |
| II  | 18 | **                | 90640-81-6                       | 0.050  |
| II  | 19 | **                | 91995-15-2                       | 0.050  |
| II  | 20 | **                | 91995-17-4                       | 0.050  |
| II  | 21 | **                | 90640-82-7                       | 0.050  |
| II  | 22 |                   | 84-69-5                          | 0.050  |
| II  | 23 | *                 | 7758-97-6                        | 0.005  |
| II  | 24 | (C.I. 104)*       | 12656-85-8                       | 0.005  |
| II  | 25 | (C.I. 34)*        | 1344-37-2                        | 0.005  |
| II  | 26 | **                | 65996-93-2                       | 0.050  |
| II  | 27 | (2- )             | 115-96-8                         | 0.050  |
| II  | 28 |                   | 79-06-1                          | 0.050  |
| III | 29 | *                 | 7789-09-5                        | 0.005  |
| III | 30 | *                 | -                                | 0.005  |
| III | 31 | *                 | 12179-04-3 /1303-96-4 /1330-43-4 | 0.005  |
| III | 32 | *                 | 7789-00-6                        | 0.005  |
| III | 33 | *                 | 7778-50-9                        | 0.005  |
| III | 34 | *                 | 7775-11-3                        | 0.005  |
| III | 35 | *                 | 12267-73-1                       | 0.005  |
| III | 36 |                   | 79-01-6                          | 0.050  |
| IV  | 37 |                   | 110-80-5                         | 0.050  |



Unless otherwise agreed in writing, this document is issued by the Company subject to its General Conditions of Service printed overleaf, available on request or accessible at <https://www.sgs.com/en/Terms-and-Conditions>. Attention is drawn to the limitation of liability, indemnification and jurisdiction issues defined therein.



(SVHC)

|    |    |                      | CAS No.                | RL (%) |
|----|----|----------------------|------------------------|--------|
| IV | 38 |                      | 109-86-4               | 0.050  |
| IV | 39 | , , *                | -                      | 0.005  |
| IV | 40 | *                    | 1333-82-0              | 0.005  |
| IV | 41 | *                    | 513-79-1               | 0.005  |
| IV | 42 | *                    | 71-48-7                | 0.005  |
| IV | 43 | *                    | 10141-05-6             | 0.005  |
| IV | 44 | *                    | 10124-43-3             | 0.005  |
| V  | 45 | 1,2,3-               | 96-18-4                | 0.050  |
| V  | 46 | 1,2- - (C6-8 ) ( C7) | 71888-89-6             | 0.050  |
| V  | 47 | 1,2- - (C7-11 ) ( )  | 68515-42-4             | 0.050  |
| V  | 48 | 1- -2-               | 872-50-4               | 0.050  |
| V  | 49 |                      | 111-15-9               | 0.050  |
| V  | 50 |                      | 302-01-2<br>/7803-57-8 | 0.050  |
| V  | 51 | *                    | 7789-06-2              | 0.005  |
| VI | 52 | 1,2-                 | 107-06-2               | 0.050  |
| VI | 53 | 4,4'- -3,3'-         | 101-14-4               | 0.050  |
| VI | 54 | 2-                   | 90-04-0                | 0.050  |
| VI | 55 |                      | 140-66-9               | 0.050  |
| VI | 56 | *                    | -                      | 0.005  |
| VI | 57 | *                    | 7778-39-4              | 0.005  |
| VI | 58 |                      | 111-96-6               | 0.050  |
| VI | 59 |                      | 117-82-8               | 0.050  |
| VI | 60 |                      |                        |        |



Unless otherwise agreed in writing, this document is issued by the Company subject to its General Conditions of Service printed overleaf, available on request or accessible at <https://www.sgs.com/en/Terms-and-Conditions>. Attention is drawn to the limitation of liability, indemnification and jurisdiction issues defined therein.



(SVHC)

|      |    |   | CAS No.     | RL (%) |
|------|----|---|-------------|--------|
| VII  | 79 |   | 75-12-7     | 0.050  |
| VII  | 80 | *   | 17570-76-2  | 0.005  |
| VII  | 81 | N,N,N',N'- 4,4'- ( )                                      | 101-61-1    | 0.050  |
| VII  | 82 | 1,3,5- ( )-1,3,5- 2,4,6-(1H, 3H,5H)- (TGIC)               | 2451-62-9   | 0.050  |
| VII  | 83 | C.I. 4§   | 6786-83-0   | 0.050  |
| VII  | 84 | 1,3,5- -[(2S 2R)-2,3- ]-1,3,5- 2,4,6-(1H, 3H, 5H)- -TGIC) | 59653-74-6  | 0.050  |
| VIII | 85 | *   | 69011-06-9  | 0.005  |
| VIII | 86 | 1,2- - ( )  | 84777-06-0  | 0.050  |
| VIII | 87 |   | 629-14-1    | 0.050  |
| VIII | 88 | 1-  | 106-94-5    | 0.050  |
| VIII | 89 | 3- -2- -2-(3- )-1,3-                                      | 143860-04-2 | 0.050  |
| VIII | 90 |   | -           | 0.050  |
| VIII | 91 | 4,4'- -3,3'-  | 838-88-0    | 0.050  |
| VIII | 92 | 4,4'-   | 101-80-4    | 0.050  |
| VIII | 93 | 4-  | 60-09-3     | 0.050  |
| VIII | 94 | 2,4-  | 95-80-7     | 0.050  |
| VIII | 95 | 4- ( )  | -           | 0.050  |
| VIII | 96 | 2- -5-  | 120-71-8    |        |



Unless otherwise agreed in writing, this document is issued by the Company subject to its General Conditions of Service printed overleaf, available on request or accessible at <https://www.sgs.com/en/Terms-and-Conditions>. Attention is drawn to the limitation of liability, indemnification and jurisdiction issues defined therein.





(SVHC)

|      |     |          | CAS No.     | RL (%) |
|------|-----|----------|-------------|--------|
| VIII | 116 | *        | 1317-36-8   | 0.005  |
| VIII | 117 | *        | 12036-76-9  | 0.005  |
| VIII | 118 | *        | 1314-41-6   | 0.005  |
| VIII | 119 | *        | 12060-00-3  | 0.005  |
| VIII | 120 | *        | 12626-81-2  | 0.005  |
| VIII | 121 |          | 625-45-6    | 0.050  |
| VIII | 122 | 1,2-     | 75-56-9     | 0.050  |
| VIII | 123 | N,N-     | 68-12-2     | 0.050  |
| VIII | 124 | N-       | 79-16-3     | 0.050  |
| VIII | 125 |          | 776297-69-9 | 0.050  |
| VIII | 126 | -        | 97-56-3     | 0.050  |
| VIII | 127 | 2-       | 95-53-4     | 0.050  |
| VIII | 128 |          | 72629-94-8  | 0.050  |
| VIII | 129 | *        | 12065-90-6  | 0.005  |
| VIII | 130 | *        | 8012-00-8   | 0.005  |
| VIII | 131 | *        | 68784-75-8  | 0.005  |
| VIII | 132 | *        | 11120-22-2  | 0.005  |
| VIII | 133 | *        | 62229-08-7  | 0.005  |
| VIII | 134 | *        | 78-00-2     | 0.005  |
| VIII | 135 | *        | 12202-17-4  | 0.005  |
| VIII | 136 |          | 307-55-1    | 0.050  |
| VIII | 137 | *        | 1319-46-6   | 0.005  |
| VIII | 138 | *        | 12141-20-7  | 0.005  |
| IX   | 139 | 4- ( )   | -           | 0.050  |
| IX   | 140 | (APFO)** | 3825-26-1   | 0.050  |
| IX   | 141 | *        | 1306-19-0   | 0.005  |
| IX   | 142 |          | 7440-43-9   | 0.005  |
| IX   | 143 | (DPP)    | 131-18-0    | 0.050  |
| IX   | 144 | (PFOA)   | 335-67-1    | 0.050  |
| X    | 145 |          |             |        |



Unless otherwise agreed in writing, this document is issued by the Company subject to its General Conditions of Service printed overleaf, available on request or accessible at <https://www.sgs.com/en/Terms-and-Conditions>. Attention is drawn to the limitation of liability, indemnification and jurisdiction issues defined therein.



(SVHC)

|      |     |  | CAS No.                | RL (%) |
|------|-----|--|------------------------|--------|
| XII  | 157 | 2- -2- -4,6- (UV-320)  | 3846-71-7              | 0.050  |
| XII  | 158 | - (2- ) (DOTE)   | 15571-58-1             | 0.050  |
| XII  | 159 | *  | 7790-79-6              | 0.005  |
| XII  | 160 | *  | 10124-36-4 /31119-53-6 | 0.005  |
| XII  | 161 | - (2- ) (DOTE)<br>- (2- ) (MOTE)   | -                      | 0.050  |
| XIII | 162 | 1,2- , (C6-10) / 1,2- ,<br>,   | -                      | 0.050  |
| XIII | 163 | 5- -2-(2,4- -3- -1- )-5-<br>-1,3- [1] 5- -2-(4,6-<br>-3- -1- )-5- -1,3- [2] [ [1]<br>[2] ] | -                      | 0.050  |



(SVHC)

|       |     |   | CAS No.     | RL (%) |
|-------|-----|---|-------------|--------|
| XIX   | 187 | (D6)  | 540-97-6    | 0.050  |
| XIX   | 188 | (EDA)   | 107-15-3    | 0.050  |
| XIX   | 189 |   | 7439-92-1   | 0.005  |
| XIX   | 190 | (D4)  | 556-67-2    | 0.050  |
| XIX   | 191 |   | 61788-32-7  | 0.050  |
| XX    | 192 | 1,7,7- -3-( ) [2.2.1] -2-<br>(3- )                  | 15087-24-8  | 0.050  |
| XX    | 193 | 4,4'-(1,3- ) (1,3-DMBBP)                            | 6807-17-6   | 0.050  |
| XX    | 194 | (k) (BkF)   | 207-08-9    | 0.050  |
| XX    | 195 | (FLT)   | 206-44-0    | 0.050  |
| XX    | 196 | (PHE)   | 85-01-8     | 0.050  |
| XX    | 197 | (PYR)   | 129-00-0    | 0.050  |
| XXI   | 198 | 2,3,3,3- -2-( )<br>( ) (HFPO-DA)                    | -           | 0.050  |
| XXI   | 199 | 2-  | 110-49-6    | 0.050  |
| XXI   | 200 | 4- (PTBP)   | 98-54-4     | 0.050  |
| XXI   | 201 | (4- )<br>(TNPP)( 4- )                               | -           | 0.050  |
| XXII  | 202 | 2- -2- -4'-   | 119313-12-1 | 0.050  |
| XXII  | 203 | 2- -1-(4- )-2- -1-                                  | 71868-10-5  | 0.050  |
| XXII  | 204 |   | 71850-09-4  | 0.050  |
| XXII  | 205 |   | -           | 0.050  |
| XXIII | 206 | 1-  | 1072-63-5   | 0.050  |
| XXIII | 207 | 2-  | 693-98-1    | 0.050  |
| XXIII | 208 |   | 94-26-8     | 0.050  |
| XXIII | 209 | ( ) **  | 22673-19-4  | 0.050  |
| XXIV  | 210 |   | 143-24-8    | 0.050  |
| XXIV  | 211 | ( ) **  | -           | 0.050  |
| XXV   | 212 | 1,4-  | 123-91-1    | 0.050  |
| XXV   | 213 | (BMP); (TBNPA);<br>2,3- -1- (2,3-DBPA)              | -           | 0.050  |
| XXV   | 214 |   | -           | 0.050  |
| XXV   | 215 | B   | 77-40-7     | 0.050  |
| XXV   | 216 |   | 111-30-8    | 0.050  |
| XXV   | 217 | (MCCP)  | -           | 0.050  |
| XXV   | 218 | *   | 13840-56-7  | 0.005  |
| XXV   | 219 | (PDDP)  | -           | 0.050  |
| XXVI  | 220 | (±)-1,7,7- -3-[(4- ) ]<br>[2.2.1] -2- / (4-<br>MBC) | -           | 0.050  |
| XXVI  | 221 | 2,2'- -(4- -6- ) (DBMC)                             | 119-47-1    | 0.050  |

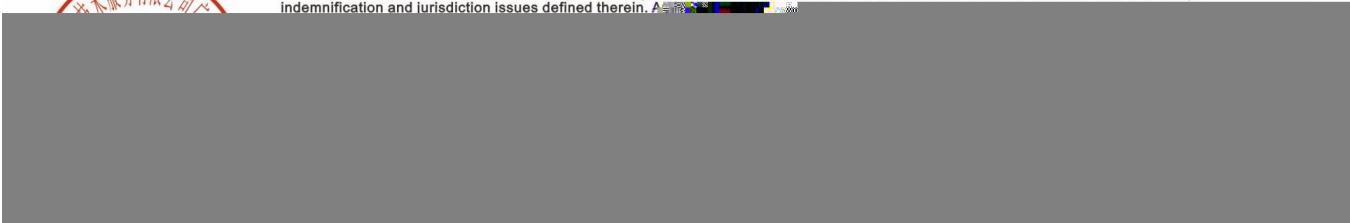
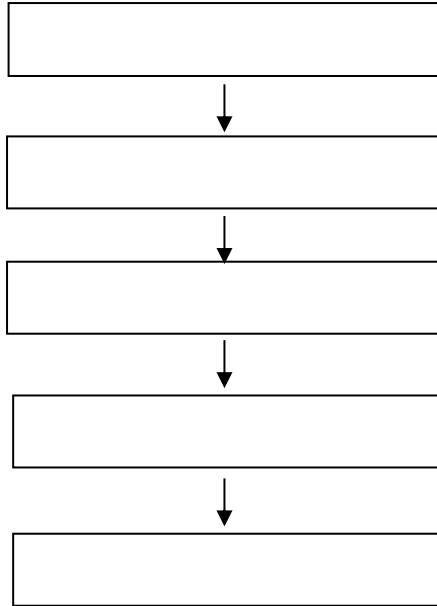


(SVHC)

|        |     |   | CAS No.         | RL (%) |
|--------|-----|---|-----------------|--------|
| XXVI   | 222 | S-( [5.2.1.0'2,6] -3- -8( 9)- ) O-(<br>2- ) O-(<br>2- ) | 255881-94-8     | 0.050  |
| XXVI   | 223 | - (2- )   | 1067-53-4       | 0.050  |
| XXVII  | 224 | N-  | 924-42-5        | 0.050  |
| XXVIII | 225 | 1,2- (2,4,6- )  | 37853-59-1      | 0.050  |
| XXVIII | 226 | A   | 79-94-7         | 0.050  |
| XXVIII | 227 | S   | 80-09-1         | 0.050  |
| XXVIII | 228 | *   | 13701-59-2      | 0.005  |
| XXVIII | 229 | (2- )   | -               | 0.050  |
| XXVIII | 230 |   | 4247-02-3       | 0.050  |
| XXVIII | 231 |   | 108-78-1        | 0.050  |
| XXVIII | 232 |   | -               | 0.050  |
| XXVIII | 233 | *   | -               | 0.050  |
| XXIX   | 234 | (4- )   | 80-07-9         | 0.050  |
| XXIX   | 235 | (2,4,6- )   | 75980-60-8      | 0.050  |
| XXX    | 236 | 2,4,6-  | 732-26-3        | 0.050  |
| XXX    | 237 | 2-(2'- -5'- ) (UV-329)                                  | 3147-75-9       | 0.050  |
| XXX    | 238 | 2-(4- )-2-( )-1-(4- )-<br>1- (PI-379)                   | 119344-86-4     | 0.050  |
| XXX    | 239 | (UV-326)  | 3896-11-5       | 0.050  |
| XXX    | 240 | 2-  | -               | 0.050  |
| XXXI   | 241 |   | 80-43-3         | 0.050  |
| /      | 242 | 6-[(C10-C13)- -( , )-2,5-<br>-1- ]                      | 2156592-54-8    | 0.050  |
| /      | 243 | O,O,O-  | 597-82-0        | 0.050  |
| /      | 244 |   | 107-51-7        | 0.050  |
| /      | 245 |   | 338-83-0        | 0.050  |
| /      | 246 |   | 192268-65-8     | 0.050  |
| /      | 247 | (4- )   | -               | 0.050  |
| /      | 248 |   | 115-86-] T#9 1: |        |



(SVHC)



(SVHC)



SGS

\*\*\* \*\*



Unless otherwise agreed in writing, this document is issued by the Company subject to its General Conditions of Service printed overleaf, available on request or accessible at <https://www.sgs.com/en/Terms-and-Conditions>. Attention is drawn to the limitation of liability, indemnification and jurisdiction issues defined therein.

